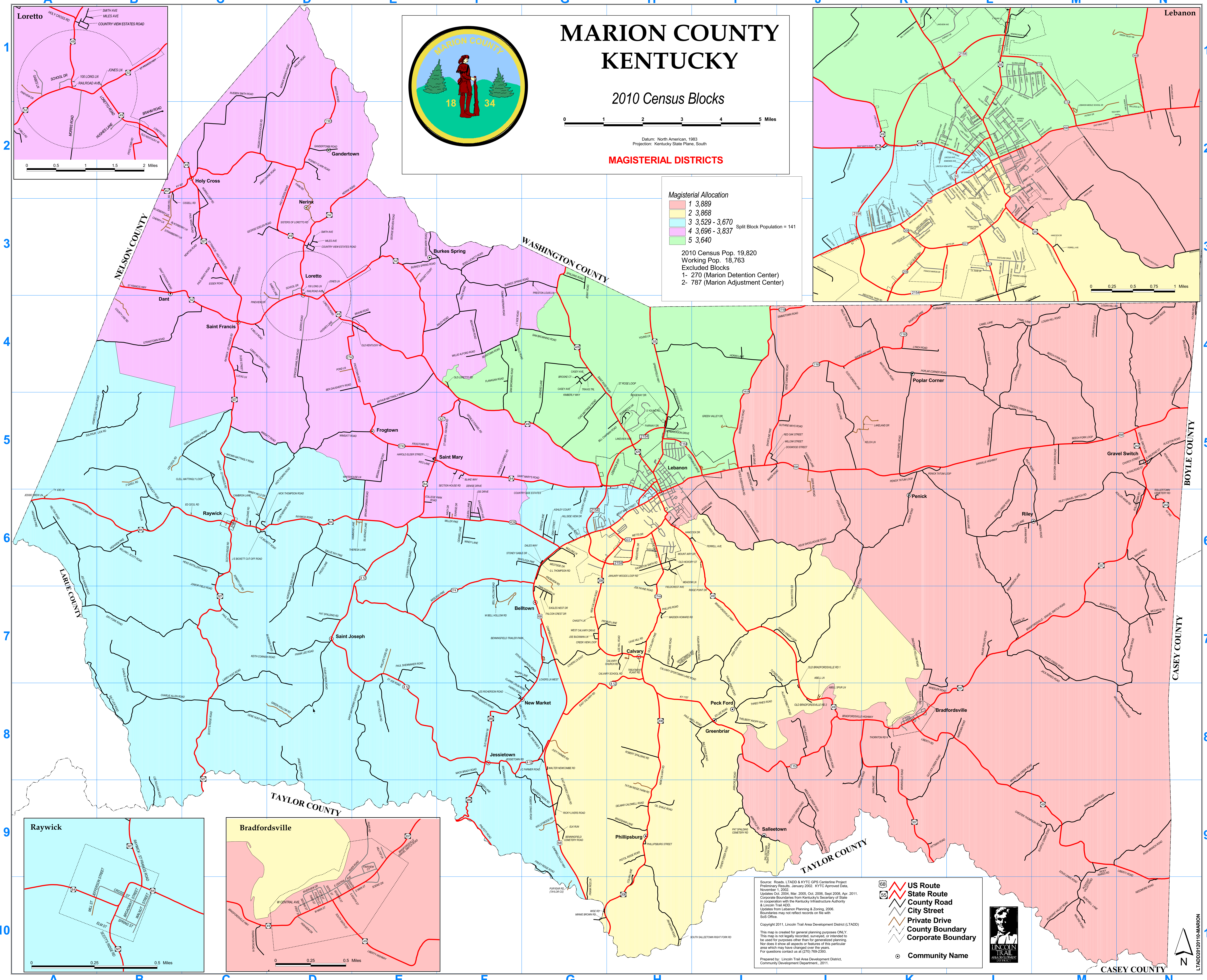


Street Name	Grid	Inset Map	Street Name	Grid	Inset Map
A 1	A	1	LOGAN RD	N4	1
A 2	A	1	LOGAN RD	N5	1
A 3	A	1	LOGAN RD	N6	1
A 4	A	1	LOGAN RD	N7	1
A 5	A	1	LOGAN RD	N8	1
A 6	A	1	LOGAN RD	N9	1
A 7	A	1	LOGAN RD	N10	1
A 8	A	1	LOGAN RD	N11	1
A 9	A	1	LOGAN RD	N12	1
A 10	A	1	LOGAN RD	N13	1
A 11	A	1	LOGAN RD	N14	1
A 12	A	1	LOGAN RD	N15	1
A 13	A	1	LOGAN RD	N16	1
A 14	A	1	LOGAN RD	N17	1
A 15	A	1	LOGAN RD	N18	1
A 16	A	1	LOGAN RD	N19	1
A 17	A	1	LOGAN RD	N20	1
A 18	A	1	LOGAN RD	N21	1
A 19	A	1	LOGAN RD	N22	1
A 20	A	1	LOGAN RD	N23	1
A 21	A	1	LOGAN RD	N24	1
A 22	A	1	LOGAN RD	N25	1
A 23	A	1	LOGAN RD	N26	1
A 24	A	1	LOGAN RD	N27	1
A 25	A	1	LOGAN RD	N28	1
A 26	A	1	LOGAN RD	N29	1
A 27	A	1	LOGAN RD	N30	1
A 28	A	1	LOGAN RD	N31	1
A 29	A	1	LOGAN RD	N32	1
A 30	A	1	LOGAN RD	N33	1
A 31	A	1	LOGAN RD	N34	1
A 32	A	1	LOGAN RD	N35	1
A 33	A	1	LOGAN RD	N36	1
A 34	A	1	LOGAN RD	N37	1
A 35	A	1	LOGAN RD	N38	1
A 36	A	1	LOGAN RD	N39	1
A 37	A	1	LOGAN RD	N40	1
A 38	A	1	LOGAN RD	N41	1
A 39	A	1	LOGAN RD	N42	1
A 40	A	1	LOGAN RD	N43	1
A 41	A	1	LOGAN RD	N44	1
A 42	A	1	LOGAN RD	N45	1
A 43	A	1	LOGAN RD	N46	1
A 44	A	1	LOGAN RD	N47	1
A 45	A	1	LOGAN RD	N48	1
A 46	A	1	LOGAN RD	N49	1
A 47	A	1	LOGAN RD	N50	1
A 48	A	1	LOGAN RD	N51	1
A 49	A	1	LOGAN RD	N52	1
A 50	A	1	LOGAN RD	N53	1
A 51	A	1	LOGAN RD	N54	1
A 52	A	1	LOGAN RD	N55	1
A 53	A	1	LOGAN RD	N56	1
A 54	A	1	LOGAN RD	N57	1
A 55	A	1	LOGAN RD	N58	1
A 56	A	1	LOGAN RD	N59	1
A 57	A	1	LOGAN RD	N60	1
A 58	A	1	LOGAN RD	N61	1
A 59	A	1	LOGAN RD	N62	1
A 60	A	1	LOGAN RD	N63	1
A 61	A	1	LOGAN RD	N64	1
A 62	A	1	LOGAN RD	N65	1
A 63	A	1	LOGAN RD	N66	1
A 64	A	1	LOGAN RD	N67	1
A 65	A	1	LOGAN RD	N68	1
A 66	A	1	LOGAN RD	N69	1
A 67	A	1	LOGAN RD	N70	1
A 68	A	1	LOGAN RD	N71	1
A 69	A	1	LOGAN RD	N72	1
A 70	A	1	LOGAN RD	N73	1
A 71	A	1	LOGAN RD	N74	1
A 72	A	1	LOGAN RD	N75	1
A 73	A	1	LOGAN RD	N76	1
A 74	A	1	LOGAN RD	N77	1
A 75	A	1	LOGAN RD	N78	1
A 76	A	1	LOGAN RD	N79	1
A 77	A	1	LOGAN RD	N80	1
A 78	A	1	LOGAN RD	N81	1
A 79	A	1	LOGAN RD	N82	1
A 80	A	1	LOGAN RD	N83	1
A 81	A	1	LOGAN RD	N84	1
A 82	A	1	LOGAN RD	N85	1
A 83	A	1	LOGAN RD	N86	1
A 84	A	1	LOGAN RD	N87	1
A 85	A	1	LOGAN RD	N88	1
A 86	A	1	LOGAN RD	N89	1
A 87	A	1	LOGAN RD	N90	1
A 88	A	1	LOGAN RD	N91	1
A 89	A	1	LOGAN RD	N92	1
A 90	A	1	LOGAN RD	N93	1
A 91	A	1	LOGAN RD	N94	1
A 92	A	1	LOGAN RD	N95	1
A 93	A	1	LOGAN RD	N96	1
A 94	A	1	LOGAN RD	N97	1
A 95	A	1	LOGAN RD	N98	1
A 96	A	1	LOGAN RD	N99	1
A 97	A	1	LOGAN RD	N100	1



# MARION COUNTY KENTUCKY

## 2010 Census Blocks

Datum: North American, 1983  
Projection: Kentucky State Plane, South

**Magisterial Allocation**

1	3,889
2	3,868
3	3,529 - 3,670
4	3,696 - 3,837
5	3,640

Split Block Population = 141

2010 Census Pop. 19,820  
Working Pop. 18,763  
Excluded Blocks  
1 - 270 (Marion Detention Center)  
2 - 787 (Marion Adjustment Center)

Source: Roads: LTADD & KYTC GPS Centerline Project  
 Preliminary Results, January 2002, KYTC Approved Data.  
 Updates Oct. 2004, Mar. 2005, Oct. 2006, Sept. 2008, Apr. 2011.  
 Corporate Boundaries from Kentucky's Secretary of State  
 in cooperation with the Kentucky Infrastructure Authority  
 & Lincoln Trail Add.  
 Updates from Lebanon Planning & Zoning, 2006.  
 Boundaries may not reflect records on file with  
 S&S Office.

Copyright 2011, Lincoln Trail Area Development District (LTADD)

This map is created for general planning purposes ONLY.  
 The map is not legally recorded, surveyed, or intended to  
 be used for purposes other than for general planning.  
 Nor does it show all aspects of this particular  
 area which may have changed over the years.  
 For questions contact us at (270) 788-2283.

Prepared by: Lincoln Trail Area Development District,  
 Community Development Department, 2011.